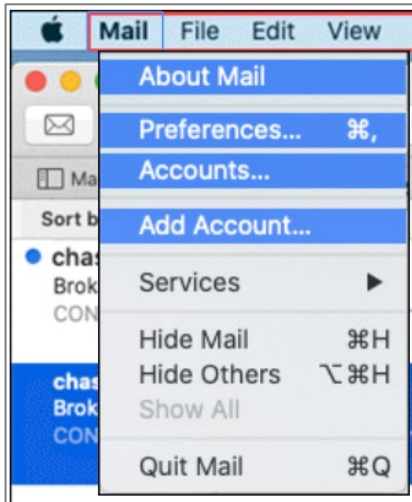


Instructions for Updating Mail Server Encryption Settings

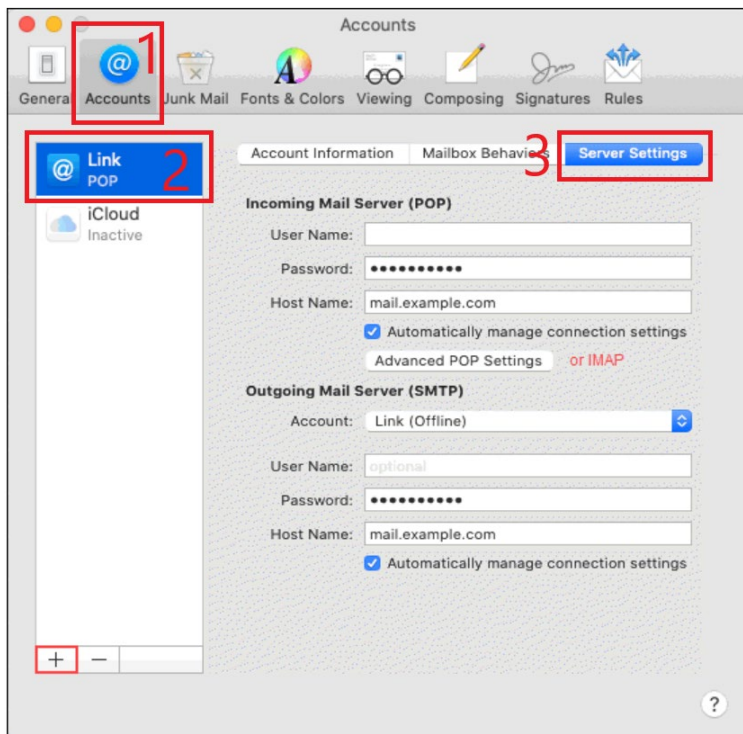
Mac Mail

This guide will walk you through updating your encryption settings in the Mac Mail email client. The appearance of menus may change slightly depending on the version of the operating system you are using.

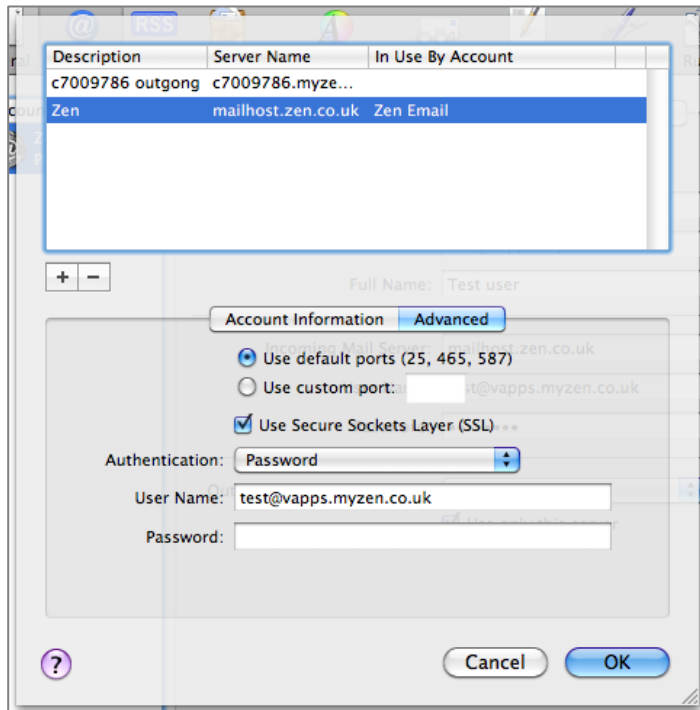
1. Open **Mac Mail** application.
2. In the top menu, Select *Mail > Preferences...*



3. In the new window that opens, click on **"Accounts"** along the top (1).
Select your CCI Wireless email (2).
Click on **"Server Settings"** (3).



4. Update information to match the following:
 - a. **Email address:** Your full email address, including "@cciwireless.ca"
 - b. **Incoming/Outgoing Mail server:** Enter *mail3.cciwireless.ca*
5. Click on the dropdown for "**Outgoing Server Account.**"
6. Click "**Edit SMTP List.**"
7. Switch to the "**Advanced**" tab.
 - a. The information must match the following (where applicable, use your personal information, not the example pictured below):
 - Click the bubble for "Use custom port:" and enter 587
 - Check the box for "Use SSL"
 - Under Authentication, select "Password"
 - Under User Name, enter your full email address, including "@cciwireless.ca"
 - Under Password, enter the password you use to access your CCI email.
 - b. Click **OK**.



- c. You will return to the "Accounts" screen. Switch to the "**General**" tab.
- d. Click "**Save Account**" option. This will test the changes. If you receive any errors after entering all the correct information, reach out to Tech Support for assistance. You may want to take note of the specific error message.

You're all set!