

## CCI User Help Guides: iPhone Mail Setup (iOS 10)

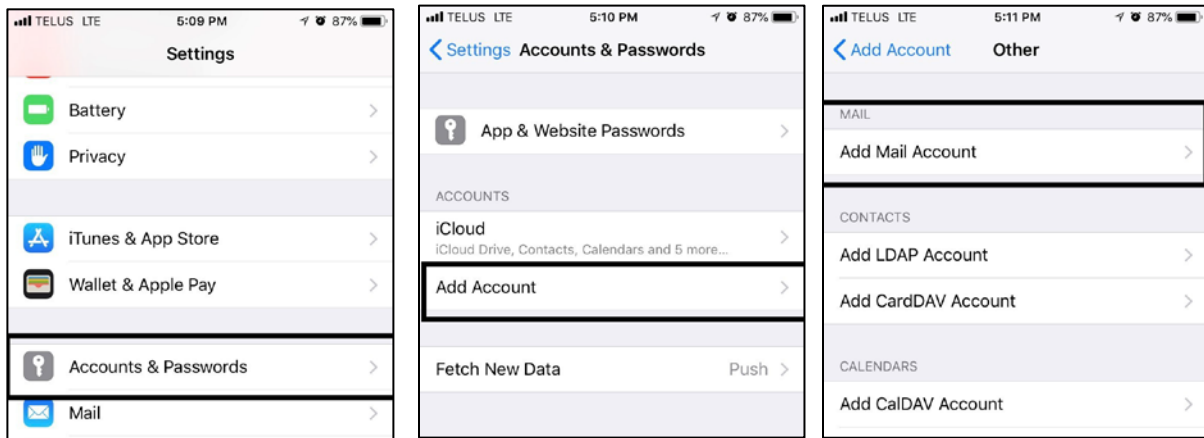
This document shows how to add your CCI email inbox to the Mail app on your iPhone, using iOS 10.

1. **Open the Settings app** (the icon looks like a gear).



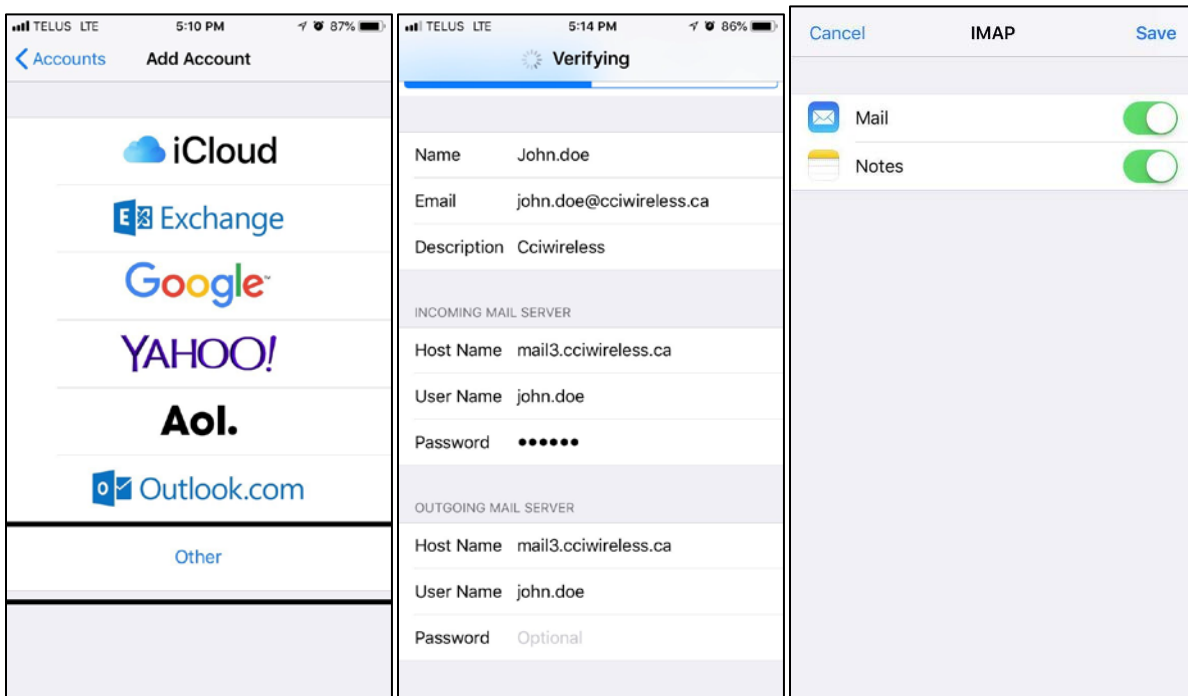
You can find it by searching "Settings" in the pull-down menu.

2. Open the "**Accounts & Passwords**" menu.
3. Open "**Add Account.**"
4. Open "**Add Mail Account.**"

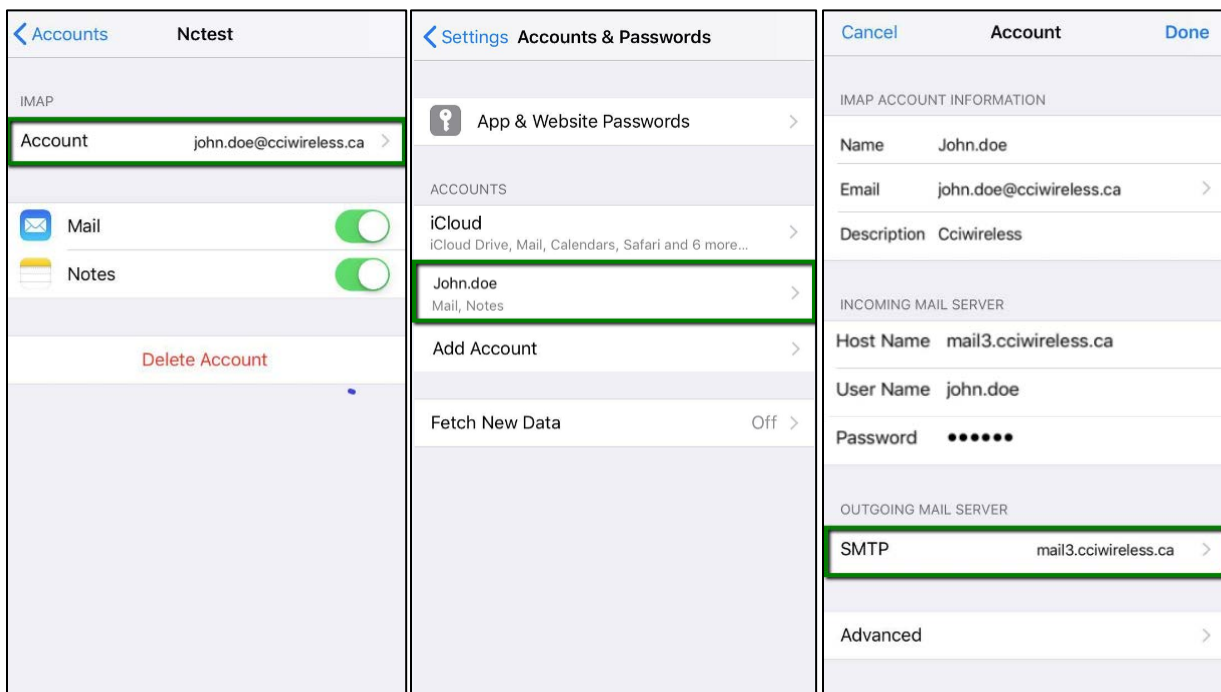


5. Select "**Other.**"
6. On the form that follows, **enter the following account and server information** (see example below Step 8):
  - a. Name: *the personalized part of your email address (preceding "@cciwired.ca")*
  - b. Email: *the account you are adding*
  - c. Description: "**cciwireless**" without quotes
  - d. Host Name: "**mail3.cciwireless.ca**" without quotes
  - e. User Name: *same as "Name" above, the personalized part of your email address.*
  - f. Password: *your CCI email account password*
  - g. Host Name: "**mail3.cciwireless.ca**" without quotes
  - h. Password: *leave blank*
7. When you have entered all the information, tap "**Next**" in the top right corner. iPhone will verify the settings (see example below Step 8).

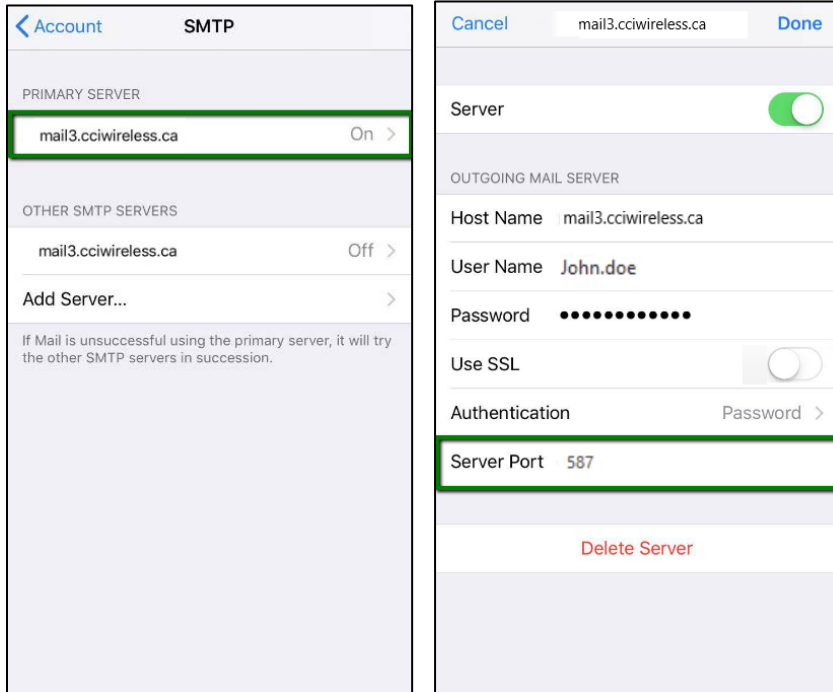
- On the next screen, **make sure "Mail" is enabled** (green) and tap **"Save"** in the top right corner.



- You will be taken back to the Account screen. Select the account you just made (**email address**).
- Click on your **Username** under "Accounts."
- Select **"SMTP"**.



12. Select **"mail3.cciwireless.ca"** under "Primary Server."
13. On the form that follows, **change "Server Port" to "587."**
14. Tap **"Done"** in the top right corner.



15. Your CCI email has been added to the iPhone Mail app. Head into the app and refresh to see your email as usual.

- end -